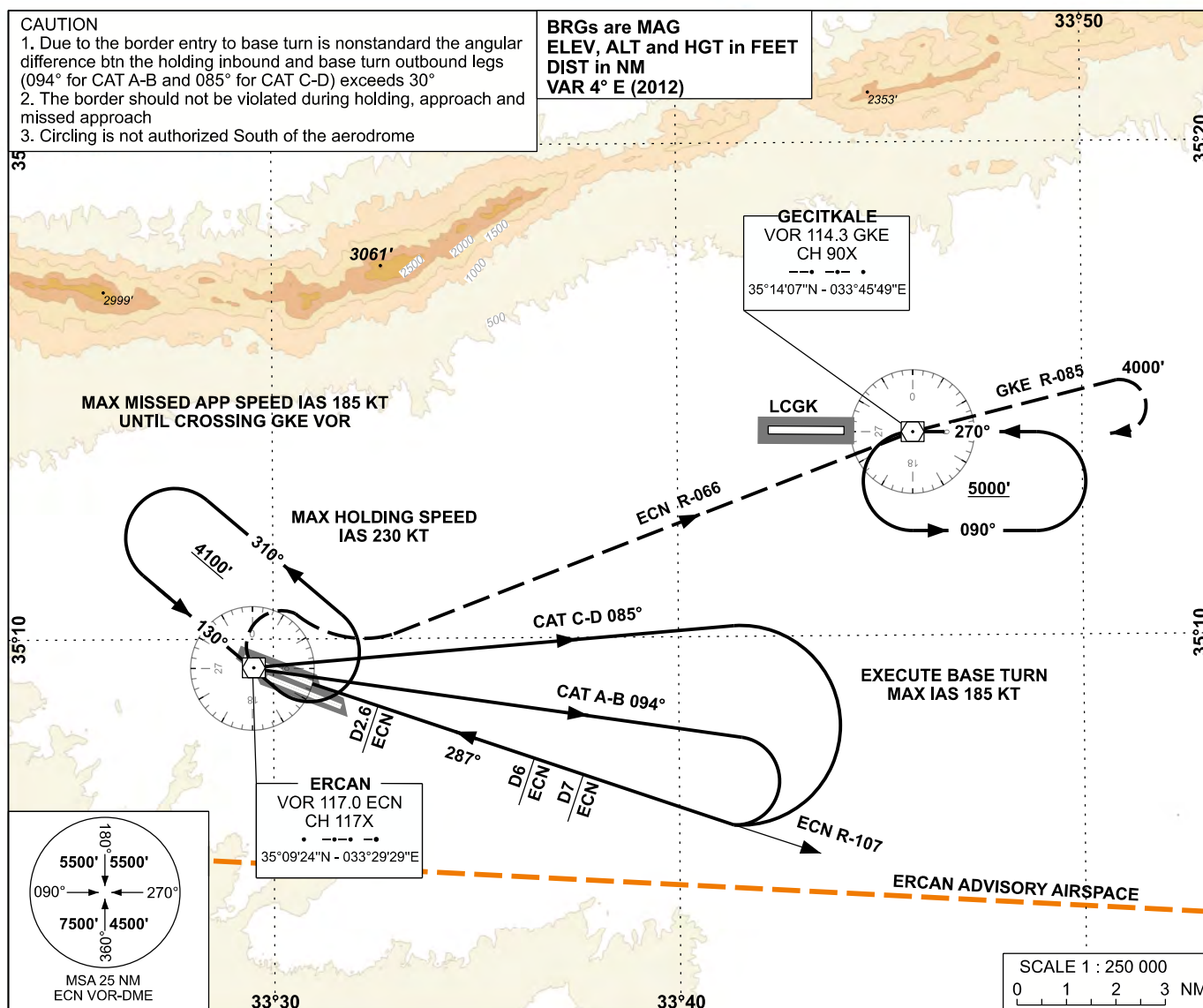


APP	127.750	AD ELEV	402 FT
TWR	120.450 - 120.250 - 120.375	TRANSITION ALTITUDE 6000 FT	
ATIS	118.350		

INSTRUMENT APPROACH CHART - ICAO

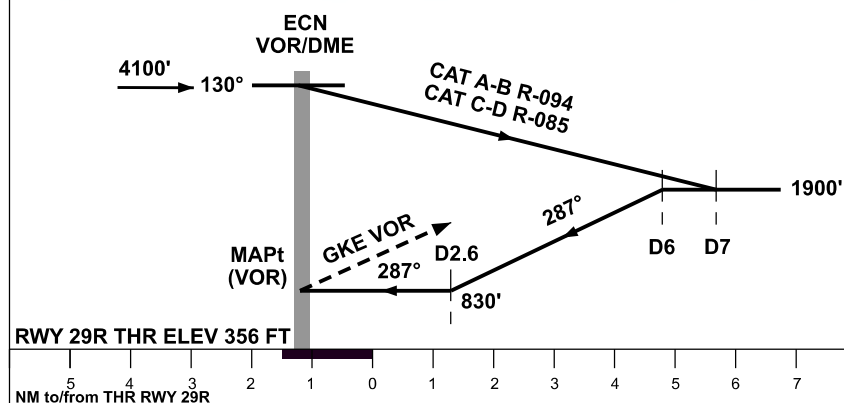
1. Due to the border entry to base turn is nonstandard the angular difference b/n the holding inbound and base turn outbound legs (094° for CAT A-B and 085° for CAT C-D) exceeds 30°
2. The border should not be violated during holding, approach and missed approach
3. Circling is not authorized South of the aerodrome

BRGs are MAG
ELEV, ALT and HGT in FEET
DIST in NM
VAR 4° E (2012)



MISSED APPROACH

MAXIMUM MISSED APPROACH SPEED IAS
185 KT UNTIL CROSSING GKE VOR TURN
RIGHT CLIMBING 5000 FT INTERCEPT ECN
R-066 PROCEED GKE VOR IF 5000 FT REACHED
BY GKE VOR JOIN THE HOLDING. IF NOT,
PROCEED CLIMBING VIA GKE VOR R-085
UNTIL CROSSING 4000 FT THEN TURN RIGHT
CLIMBING 5000 FT PROCEED GKE VOR
AND HOLD.



OCA (H)	A	B	C	D
Straight-in Approach	830' (474')			
Circling	900' (498')		1100' (698')	

CHANGE: RWY NAME, CHART REVISED